



COMPASS

Queens Luxury Report

May 26 - June 01, 2025, Residential Contracts \$1.25M+

Photo: 46-30 Center Blvd, Unit PH8

The Queens luxury real estate market, defined as all properties priced \$1.25M and above, saw 25 contracts signed this week, made up of 12 condos, and 13 houses. The previous week saw 18 deals. For more information or data, please reach out to a Compass agent.

\$1,658,071

Average Asking Price

\$1,515,000

Median Asking Price

\$1,282

Average PPSF

0%

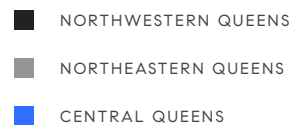
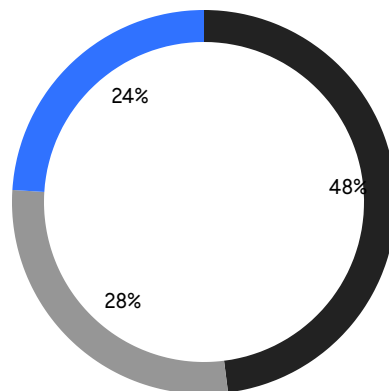
Average Discount

\$41,451,751

Total Volume

71

Average Days On Market

**12**

Condo Deal(s)

0

Co-op Deal(s)

13

Single-Family Deal(s)

\$1,824,321

Average Asking Price

\$0

Average Asking Price

\$1,504,608

Average Asking Price

\$1,765,000

Median Asking Price

\$0

Median Asking Price

\$1,390,000

Median Asking Price

\$1,569

Average PPSF

\$970

Average PPSF

1,202

Average SqFt

1,794

Average SqFt

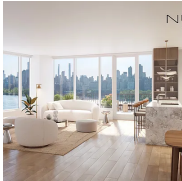


3 Court Square, Unit PH301

Long Island City

Contract Signed

| | | | | | | | |
|------|-------|---------|-------------|---------|---------|-------|---|
| Type | Condo | Price | \$2,797,350 | Sq. Ft. | 969 | Beds | 2 |
| DOM | 77 | Initial | \$2,797,350 | PPSF | \$2,887 | Baths | 2 |



30-55 Vernon Blvd, Unit PHB

Astoria

Contract Signed

| | | | | | | | |
|------|-------|---------|-------------|---------|---------|-------|---|
| Type | Condo | Price | \$2,280,450 | Sq. Ft. | 1,521 | Beds | 3 |
| DOM | 5 | Initial | \$2,280,450 | PPSF | \$1,500 | Baths | 2 |

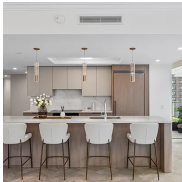


80-33 169th St

Hillcrest

Contract Signed

| | | | | | | | |
|------|-------|---------|-------------|---------|---------|-------|---|
| Type | House | Price | \$2,100,000 | Sq. Ft. | 968 | Beds | 5 |
| DOM | 1 | Initial | \$2,100,000 | PPSF | \$2,169 | Baths | 4 |

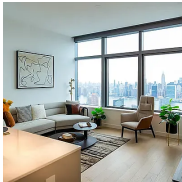


78-29 Austin St, Unit PH2D

Forest Hills Gardens

Contract Signed

| | | | | | | | |
|------|-------|---------|-------------|---------|---------|-------|---|
| Type | Condo | Price | \$2,052,375 | Sq. Ft. | 1,513 | Beds | 3 |
| DOM | - | Initial | \$2,052,375 | PPSF | \$1,357 | Baths | 2 |

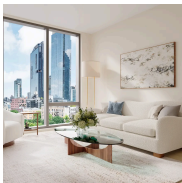


3 Court Square, Unit 5701

Long Island City

Contract Signed

| | | | | | | | |
|------|-------|---------|-------------|---------|---------|-------|---|
| Type | Condo | Price | \$2,039,999 | Sq. Ft. | 969 | Beds | 2 |
| DOM | 73 | Initial | \$2,039,999 | PPSF | \$2,106 | Baths | 2 |



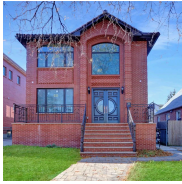
11-36 45th Road, Unit 606A

Long Island City

Contract Signed

| | | | | | | | |
|------|-------|---------|-------------|---------|---------|-------|---|
| Type | Condo | Price | \$1,860,000 | Sq. Ft. | 1,108 | Beds | 2 |
| DOM | 23 | Initial | \$1,860,000 | PPSF | \$1,679 | Baths | 2 |

Compass is a licensed real estate broker and abides by Equal Housing Opportunity laws. All material presented herein is intended for informational purposes only. Information is compiled from sources deemed reliable but is subject to errors, omissions, changes in price, condition, sale, or withdrawal without notice. No statement is made as to the accuracy of any description. All measurements and square footages are approximate. This is not intended to solicit property already listed. Nothing herein shall be construed as legal, accounting or other professional advice outside the realm of real estate brokerage.



58-28 218th St

Bayside

Contract Signed

| | | | | | | | |
|------|-------|---------|-------------|---------|---------|-------|---|
| Type | House | Price | \$1,850,000 | Sq. Ft. | 1,078 | Beds | 5 |
| DOM | 141 | Initial | \$1,850,000 | PPSF | \$1,716 | Baths | 6 |



32-40 213th St

Bayside

Contract Signed

| | | | | | | | |
|------|-------|---------|-------------|---------|-------|-------|---|
| Type | House | Price | \$1,799,000 | Sq. Ft. | 2,248 | Beds | 4 |
| DOM | 82 | Initial | \$1,799,000 | PPSF | \$800 | Baths | 4 |



11-36 45th Road, Unit 605B

Long Island City

Contract Signed

| | | | | | | | |
|------|-------|---------|-------------|---------|---------|-------|---|
| Type | Condo | Price | \$1,780,000 | Sq. Ft. | 1,083 | Beds | 2 |
| DOM | 26 | Initial | \$1,780,000 | PPSF | \$1,644 | Baths | 2 |



27-28 Thomson Ave, Unit 235

Long Island City

Contract Signed

| | | | | | | | |
|------|-------|---------|-------------|---------|---------|-------|---|
| Type | Condo | Price | \$1,750,000 | Sq. Ft. | 1,367 | Beds | 2 |
| DOM | 39 | Initial | \$1,750,000 | PPSF | \$1,281 | Baths | 2 |

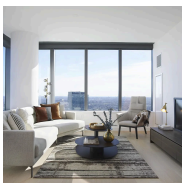


53-04 Seabury St

Nassau Heights

Contract Signed

| | | | | | | | |
|------|-------|---------|-------------|---------|-------|-------|---|
| Type | House | Price | \$1,700,000 | Sq. Ft. | 3,066 | Beds | 9 |
| DOM | 260 | Initial | \$1,700,000 | PPSF | \$554 | Baths | 7 |



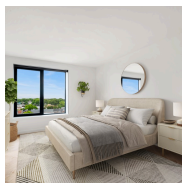
3 Court Square, Unit 703

Long Island City

Contract Signed

| | | | | | | | |
|------|-------|---------|-------------|---------|---------|-------|---|
| Type | Condo | Price | \$1,551,677 | Sq. Ft. | 909 | Beds | 2 |
| DOM | 575 | Initial | \$1,551,677 | PPSF | \$1,707 | Baths | 2 |

Compass is a licensed real estate broker and abides by Equal Housing Opportunity laws. All material presented herein is intended for informational purposes only. Information is compiled from sources deemed reliable but is subject to errors, omissions, changes in price, condition, sale, or withdrawal without notice. No statement is made as to the accuracy of any description. All measurements and square footages are approximate. This is not intended to solicit property already listed. Nothing herein shall be construed as legal, accounting or other professional advice outside the realm of real estate brokerage.

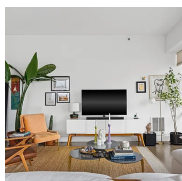


22-54 46th St, Unit 505

Astoria

Contract Signed

| | | | | | | | |
|------|-------|---------|-------------|---------|---------|-------|---|
| Type | Condo | Price | \$1,515,000 | Sq. Ft. | 1,408 | Beds | 3 |
| DOM | 1 | Initial | \$1,515,000 | PPSF | \$1,076 | Baths | 2 |

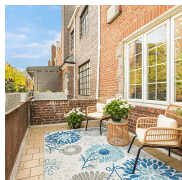


5-19 Borden Ave, Unit 7A

Long Island City

Contract Signed

| | | | | | | | |
|------|-------|---------|-------------|---------|---------|-------|---|
| Type | Condo | Price | \$1,485,000 | Sq. Ft. | 1,234 | Beds | 2 |
| DOM | 14 | Initial | \$1,485,000 | PPSF | \$1,204 | Baths | 2 |

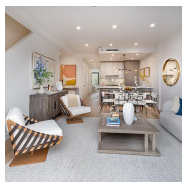


33-14 76th St

Jackson Heights

Contract Signed

| | | | | | | | |
|------|-------|---------|-------------|---------|-------|-------|---|
| Type | House | Price | \$1,450,000 | Sq. Ft. | 1,928 | Beds | 3 |
| DOM | 29 | Initial | \$1,450,000 | PPSF | \$753 | Baths | 2 |



21-31 Shore Blvd, Unit 2F

Astoria

Contract Signed

| | | | | | | | |
|------|-------|---------|-------------|---------|---------|-------|---|
| Type | Condo | Price | \$1,425,000 | Sq. Ft. | 1,207 | Beds | 2 |
| DOM | 13 | Initial | \$1,425,000 | PPSF | \$1,181 | Baths | 2 |



83-13 Britton Ave

Elmhurst

Contract Signed

| | | | | | | | |
|------|-------|---------|-------------|---------|---|-------|---|
| Type | House | Price | \$1,395,000 | Sq. Ft. | - | Beds | 8 |
| DOM | 109 | Initial | \$1,395,000 | PPSF | - | Baths | 3 |



32-20 167th St

Flushing

Contract Signed

| | | | | | | | |
|------|-------|---------|-------------|---------|-------|-------|---|
| Type | House | Price | \$1,390,000 | Sq. Ft. | 2,039 | Beds | 4 |
| DOM | 11 | Initial | \$1,390,000 | PPSF | \$682 | Baths | - |

Compass is a licensed real estate broker and abides by Equal Housing Opportunity laws. All material presented herein is intended for informational purposes only. Information is compiled from sources deemed reliable but is subject to errors, omissions, changes in price, condition, sale, or withdrawal without notice. No statement is made as to the accuracy of any description. All measurements and square footages are approximate. This is not intended to solicit property already listed. Nothing herein shall be construed as legal, accounting or other professional advice outside the realm of real estate brokerage.

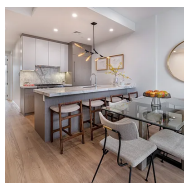


61-25 211th St

Oakland Gardens

Contract Signed

| | | | | | | | |
|------|-------|---------|-------------|---------|---|-------|---|
| Type | House | Price | \$1,388,000 | Sq. Ft. | - | Beds | 3 |
| DOM | 119 | Initial | \$1,388,000 | PPSF | - | Baths | 3 |



21-31 Shore Blvd, Unit 3E

Astoria

Contract Signed

| | | | | | | | |
|------|-------|---------|-------------|---------|---------|-------|---|
| Type | Condo | Price | \$1,355,000 | Sq. Ft. | 1,129 | Beds | 2 |
| DOM | 12 | Initial | \$1,355,000 | PPSF | \$1,201 | Baths | 2 |



23-01 33rd Road

Astoria

Contract Signed

| | | | | | | | |
|------|-------|---------|-------------|---------|---------|-------|---|
| Type | House | Price | \$1,350,000 | Sq. Ft. | 1,224 | Beds | 3 |
| DOM | 1 | Initial | \$1,350,000 | PPSF | \$1,103 | Baths | 2 |

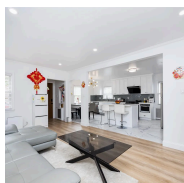


101-19 75th Road

Forest Hills

Contract Signed

| | | | | | | | |
|------|-------|---------|-------------|---------|-------|-------|-----|
| Type | House | Price | \$1,318,000 | Sq. Ft. | 1,567 | Beds | 3 |
| DOM | 23 | Initial | \$1,318,000 | PPSF | \$842 | Baths | 3.5 |



53-46 Hollis Court Blvd

Auburndale

Contract Signed

| | | | | | | | |
|------|-------|---------|-------------|---------|-------|-------|---|
| Type | House | Price | \$1,289,900 | Sq. Ft. | 1,800 | Beds | 5 |
| DOM | 8 | Initial | \$1,289,900 | PPSF | \$717 | Baths | 3 |



33-29 166th St

Flushing

Contract Signed

| | | | | | | | |
|------|-------|---------|-------------|---------|-------|-------|---|
| Type | House | Price | \$1,280,000 | Sq. Ft. | 1,931 | Beds | 4 |
| DOM | 25 | Initial | \$1,280,000 | PPSF | \$663 | Baths | 3 |

Compass is a licensed real estate broker and abides by Equal Housing Opportunity laws. All material presented herein is intended for informational purposes only. Information is compiled from sources deemed reliable but is subject to errors, omissions, changes in price, condition, sale, or withdrawal without notice. No statement is made as to the accuracy of any description. All measurements and square footages are approximate. This is not intended to solicit property already listed. Nothing herein shall be construed as legal, accounting or other professional advice outside the realm of real estate brokerage.



93-01 71st Ave
Forest Hills

Contract Signed

| | | | | | | | |
|------|-------|---------|-------------|---------|-------|-------|---|
| Type | House | Price | \$1,250,000 | Sq. Ft. | 1,884 | Beds | 3 |
| DOM | 24 | Initial | \$1,250,000 | PPSF | \$664 | Baths | 2 |

Compass is a licensed real estate broker and abides by Equal Housing Opportunity laws. All material presented herein is intended for informational purposes only. Information is compiled from sources deemed reliable but is subject to errors, omissions, changes in price, condition, sale, or withdrawal without notice. No statement is made as to the accuracy of any description. All measurements and square footages are approximate. This is not intended to solicit property already listed. Nothing herein shall be construed as legal, accounting or other professional advice outside the realm of real estate brokerage.